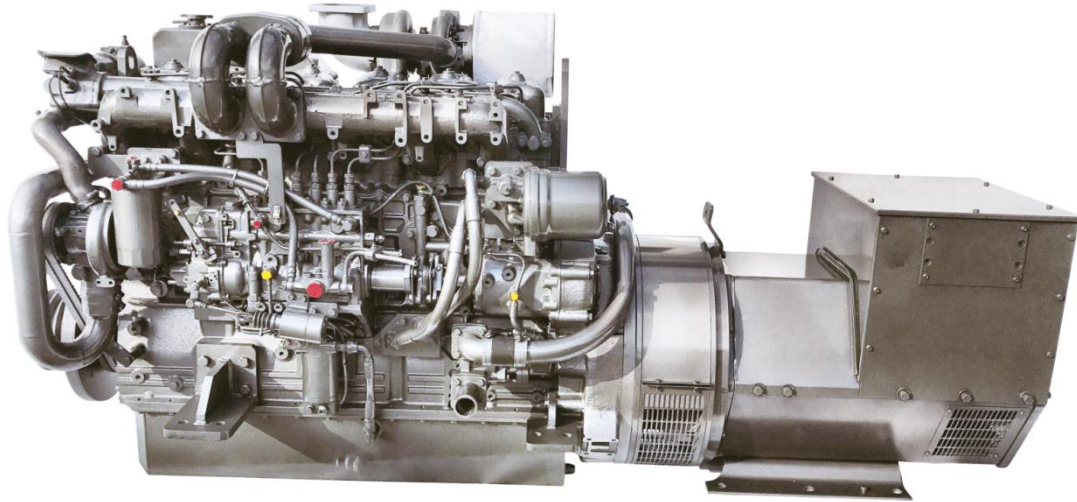


# Q - Genset series

150~230 kW (50Hz) / 165~270 kW (60Hz)



\* This image can be different somewhat according to the engine model.

## Specifications

GENERATOR		Q150GS	Q176GS	Q210GS	Q230GS	Q165GS	Q200GS	Q230GS*	Q270GS
Hz / rpm		50 / 1500				60 / 1800			
Power[kW]	Stand-by	150	176	210	230	165	200	230	270
	Prime	140	160	190	210	150	180	210	250
Alternator	Model	274G	274H	274K	314D	274F	274H	274K	314C
	Output	140	160	200	240	160	200	235	250
	Phase	3 phase ( 1 phase genset performance is different with upper table )							
Insulation Class		H – class							
ENGINE									
Configuration		4-Stroke, Fresh Water Cooling							
Cylinders		In-line 6							
Displacement [cc]		11,149							
Bore x Stroke [mm]		130 X 140							
Compression Ratio		16.0 : 1	16.0 : 1	16.0 : 1	16.5 : 1	16.0 : 1	16.0 : 1	16.0 : 1	16.5 : 1
Injection System		Direct Injectors (DI), Bosch Type							
Cooling Water Capacity [L]		50			55	50			55
Aspiration		TC	TC	TCI	TCI	TC	TC	TCI	TCI
Engine Oil (L)		40							
Flywheel Housing		SAE #1							
Fuel Consumption (L/h)	100%	35.5	41.7	49.6	54.4	40.7	49.4	56.8	66.7
	75%	26.7	31.3	37.3	40.8	30.6	37.0	42.6	50.0
	50%	17.7	20.8	24.9	27.3	20.4	24.8	28.5	33.3
	25%	8.9	10.5	12.4	13.6	10.2	12.4	14.2	16.7
Dimension] [mm]	Length	2,600	2,600	2,650	2,260	2,170	2,170	2,260	2,650
	Width	830	830	830	920	890	890	920	830
	Height	1,500	1,500	1,500	1,200	1,200	1,200	1,200	1,500
Weight [Kg]		1,750	1,750	1,900	1,800	1,610	1,610	1,800	1,900