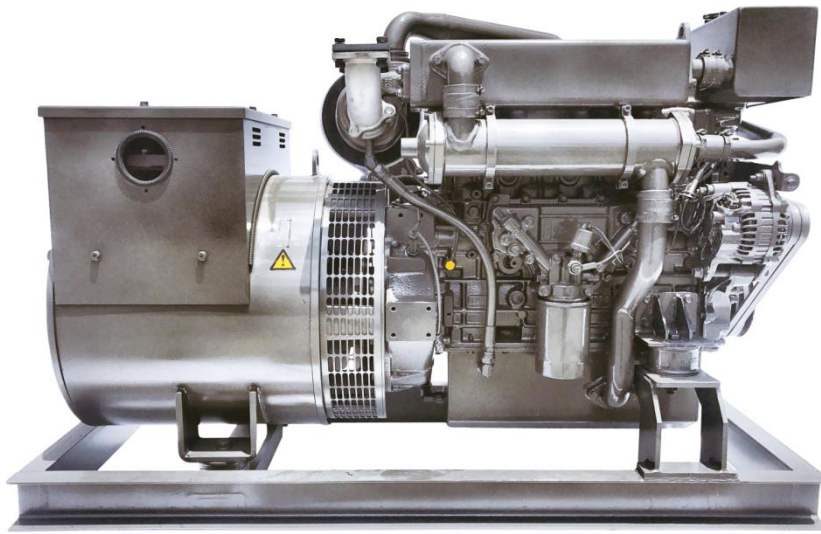


# M - Genset series

35~56 kW (50Hz) / 40~70 kW (60Hz)



\* This image can be different somewhat according to the engine model.

## Specifications

GENERATOR		M35GS	M43GS	M56GS	M40GS	M55GS	M70GS
Hz / rpm		50 / 1500			60 / 1800		
Power [kW]	Stand-by	35	43	56	40	55	70
	Prime	31	40	50	36	50	60
Alternator	Model	184J	224D	224F	184G	224D	224E
	Output	32	40	50	30	50	60
	Phase	3 phase ( 1 phase genset performance is different with upper table )					
Insulation Class		H - class					
ENGINE							
Configuration		4-Stroke, Fresh Water Cooling			4-Stroke, Fresh Water Cooling		
Displacement [cc]		3,568	3,298	3,907	3,568	3,298	3,907
Cylinders		In-line 4					
Bore x Stroke [mm]		104 X105	100 X 105	104 X 115	104 X105	100 X 105	104 X 115
Compression Ratio		18.0 : 1	16.5 : 1	16.5 : 1	18.0 : 1	16.5 : 1	16.5 : 1
Injection System		Direct Injectors (DI), Bosch Type					
Aspiration		NA	TC	TCI	NA	TC	TCI
Engine Oil Capacity [L]		8.2	8.2	14.0	8.2	8.2	14.0
Cooling Water Capacity [L]		18		20	18		20
Flywheel Housing		SAE #4					
Fuel Consumption ( L/h)	100%	8.8	10.8	14.2	9.9	13.6	17.3
	75%	6.7	8.1	10.6	7.4	10.2	13
	50%	4.4	5.5	7.1	5	6.8	8.7
	25%	2.3	2.7	3.6	2.5	3.5	4.3
Dimension] [mm]	Length	1,800	1,800	1,800	1,380	1,520	1,520
	Width	775	775	775	640	640	640
	Height	1,100	1,100	1,100	800	800	800
Weight [Kg]		850	900	930	820	850	900